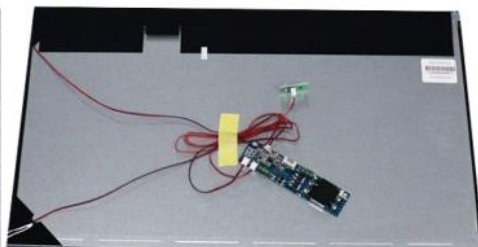


TDD-TD|OFTD-xxxH

10.1-65" High Brightness TFT Displays



10.1-27"



21.5-65" Open Frame



Overview

Designed especially for outdoor application, the **TDD High Brightness TFT Displays** include **10.1 to 86 inch, Open Frame, Optical Bonding, Solar Powered, Bar Type, Full Array Local Dimming, Ultra & Custom High Brightness Displays** types, ensuring excellent visibility in direct sunlight. Custom backlight solution & advanced brightness sensor allow for automatic adjustments based on ambient light, optimizing readability and energy efficiency, ensuring the clear visibility at all times and extending the lifespan of the displays – making it the ideal solution for the bright environments.

Features(with Durable Metal Case for Accessories)

- 1000 up to 5000 nits, Sunlight Readable, Wide Operating Temperature
- 24/7 IPS Panel with Industrial Grade LED Backlights (analog / PWM Dimming Control)
- Available in Kits Form, Open Frame, Waterproof Optical Bonding Tempered Glass and Fully Custom Design

Specifications

Panel

LCD Type	TFT / IPS / Transmissive / Normally Black
Diagonal Size	10.1-65"(4:3 / 16:9 / 16:10), 25.65 – 165.1cm, Active matrix TFT LCD (WLED)
Active Area (mm)	216.96 mm x 135.6 mm - 1428.48 mm x 803.52 mm
Pixel Pitch (H x V)	0.1695 x 0.1695 mm - 0.372 x 0.372 mm
Resolution	1920 x 1080 / 3840 x 2160
Viewing Angle	Horizontal: 89° or 178° total / Vertical: 89° or 178° (Typ.)(CR≥10)
Number of Colors	16.7 million
Brightness (typical)	1000 - 2000 nits
Response Time-total	8 - 30 (Typ.)(Tr+Td) ms
Contrast Ratio	1200:1
Input Video Frequency	Horizontal: 30 - 60 KHz / Vertical: 50 - 75 Hz
Interface	LVDS 20-51 pins
Supply Voltage	12V (Typ.)

PCAP Touch Panel **None**

LCD Controller (A/D) Board

Video Interfaces	Default: 1*VGA, 1*HDMI for 1K, 2*HDMI for 4K; Optional: DVI x1, Display Port x1
Connectors & Controls	Audio Mini jack x1 / DC x1; 5 OSD buttons(optional)
Power	Supply / Consumption: 100-240 VAC / 24VDC +/- 5%; 9-960W typical, 1.2W sleep, 0.5W off
Mechanical	Outline Dimensions(WxHxD) / Weight (Unpacked/Packed): Subject to change Box Dimensions: N/A / Mounting: Kits Form, Open Frame Form

Environmental Operating / Storage Temperature: -10°C to 50°C / -20°C to 60°C

Accessories LCD controller & constant current boards, power supply, **ambient light sensor** & panel cable

Others MTBF/Warranty/Metal Case/Ready for Use: 50,000 hours demonstrated /1-year / silver / 24/7

* TDD (www.tddtouch.com, sales@tddtouch.com) reserves the right to change specifications without prior notice. **27**